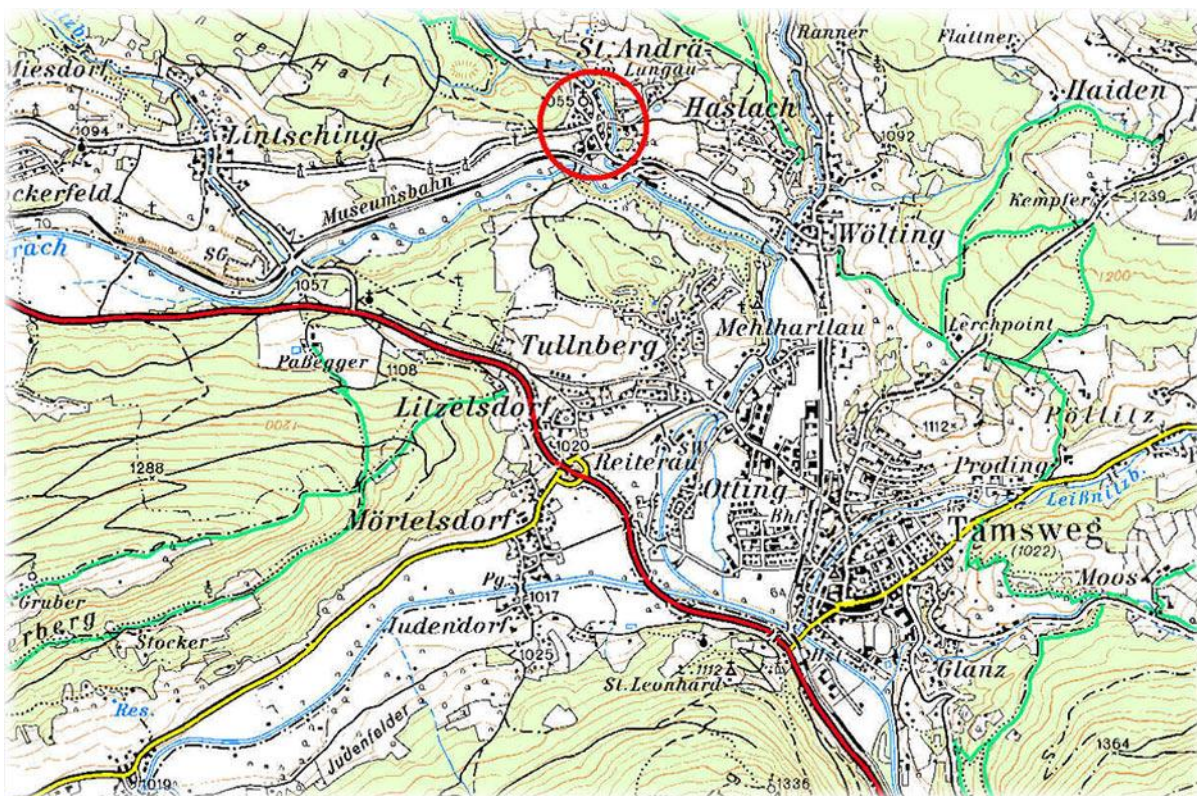
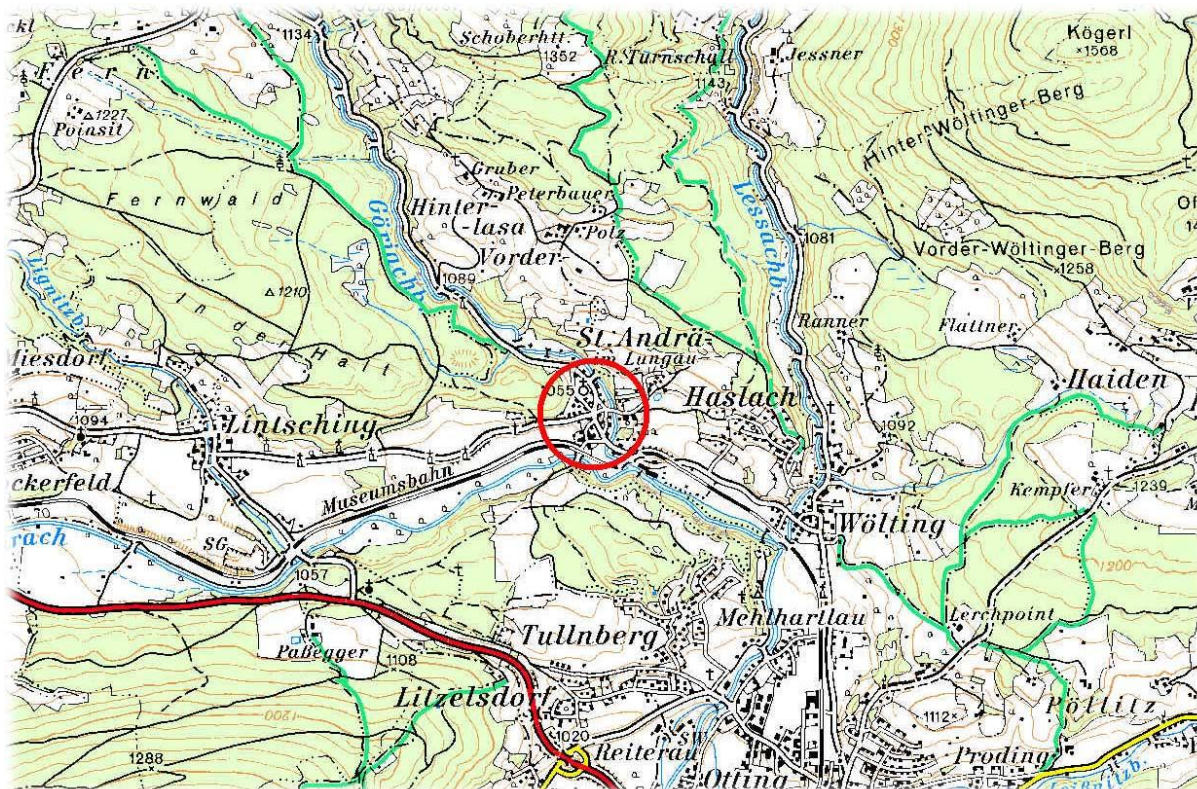




Anflug zur Ziellinie:

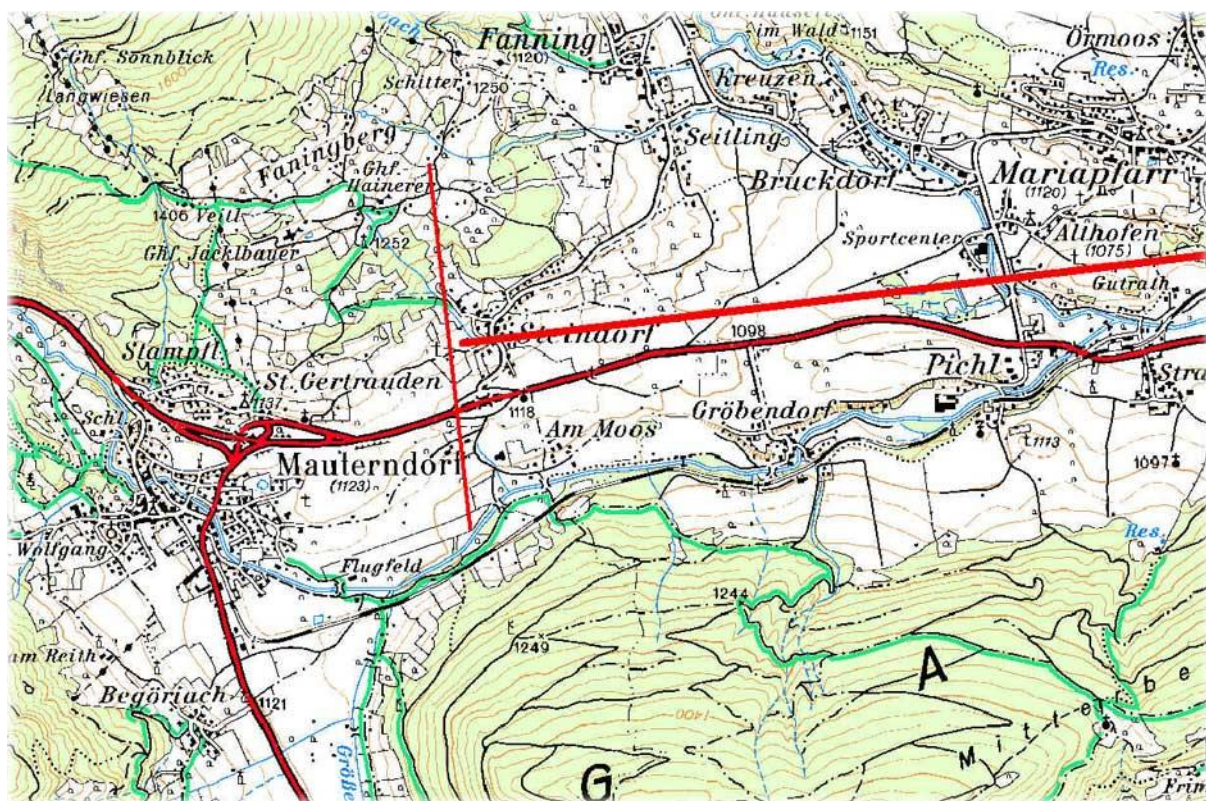
06 Checkpoint N478'54" E013°47'36" 1054 m MSL = St. Andrä im Lungaug





Kurslinie zur Ziellinie

Zielpunkt = N47°08'30" E013°41'57" 1147 MSL =





Kurslinie vom Checkpoint zum Zielpunkt (Ziellinie)

